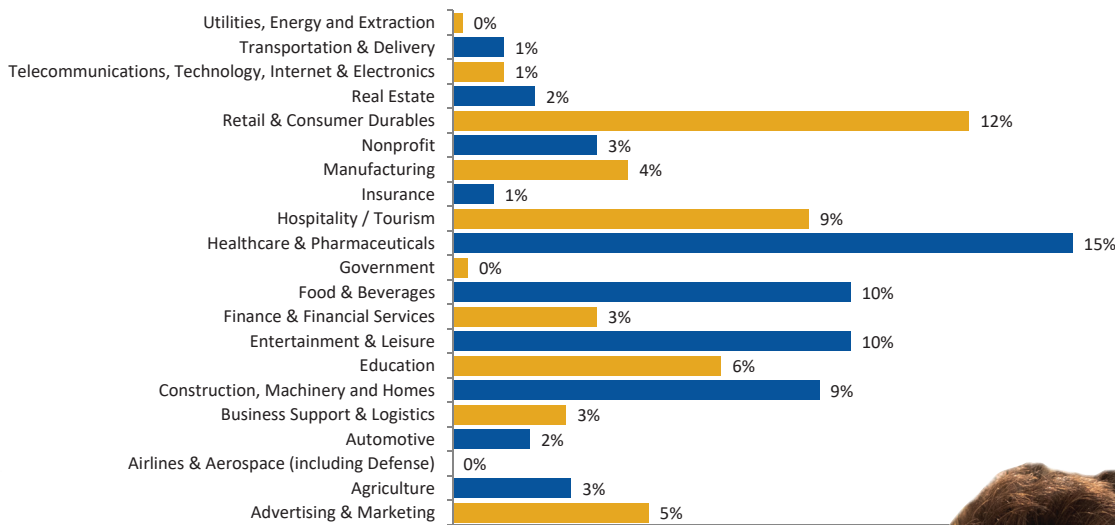


COVID-19 BUSINESS SURVEY

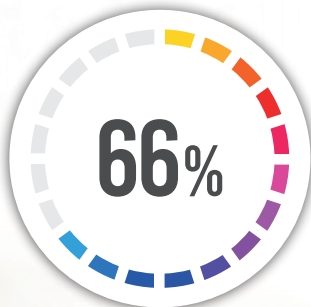


The County of Simcoe Economic Development Office (EDO), in collaboration with its member municipalities and partners launched the **COVID-19 Business Survey** to gather information on the pandemic's impact on the business community, gain an understanding of the needs of local businesses, determine how the County and regional partners can best support them, and provide information to various levels of government about different supports needed to weather the COVID-19 pandemic. The survey ran for 21 days between March 19 and April 9, 2020.

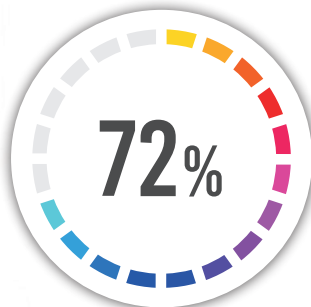
PRINCIPAL INDUSTRY IDENTIFIED BY RESPONDENTS



811
BUSINESSES
PARTICIPATED



REDUCTION IN
STAFF HOURS
SINCE MARCH 1

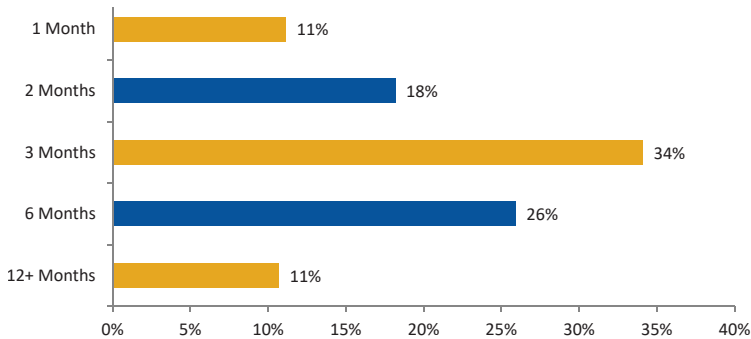


REVENUE LOST
COMPARED TO
AVERAGE YEAR

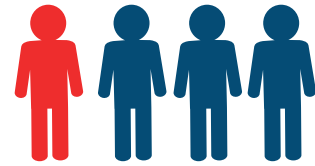
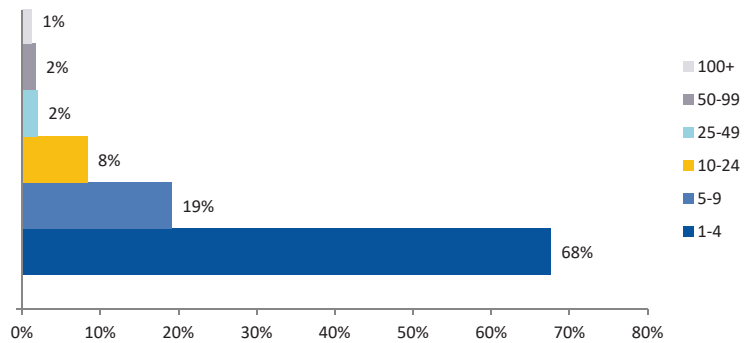
67% OF BUSINESSES
ARE NOT EQUIPPED
TO WORK FROM HOME

MAY 2020

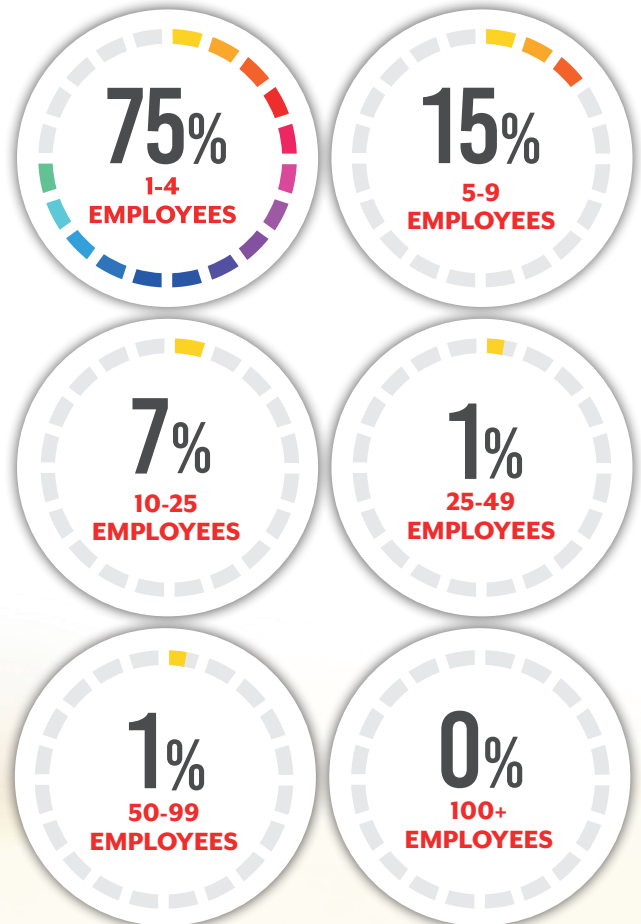
NUMBER OF MONTHS BUSINESSES ANTICIPATE THEY CAN SURVIVE IN SHUTDOWN BEFORE CLOSING



NUMBER OF EMPLOYEES IN FEBRUARY 2020



NUMBER OF EMPLOYEES LAID OFF SINCE MARCH 1



68%

OF BUSINESSES DO NOT HAVE INSURANCE THAT COVERS PANDEMICS*

*29% ARE UNSURE